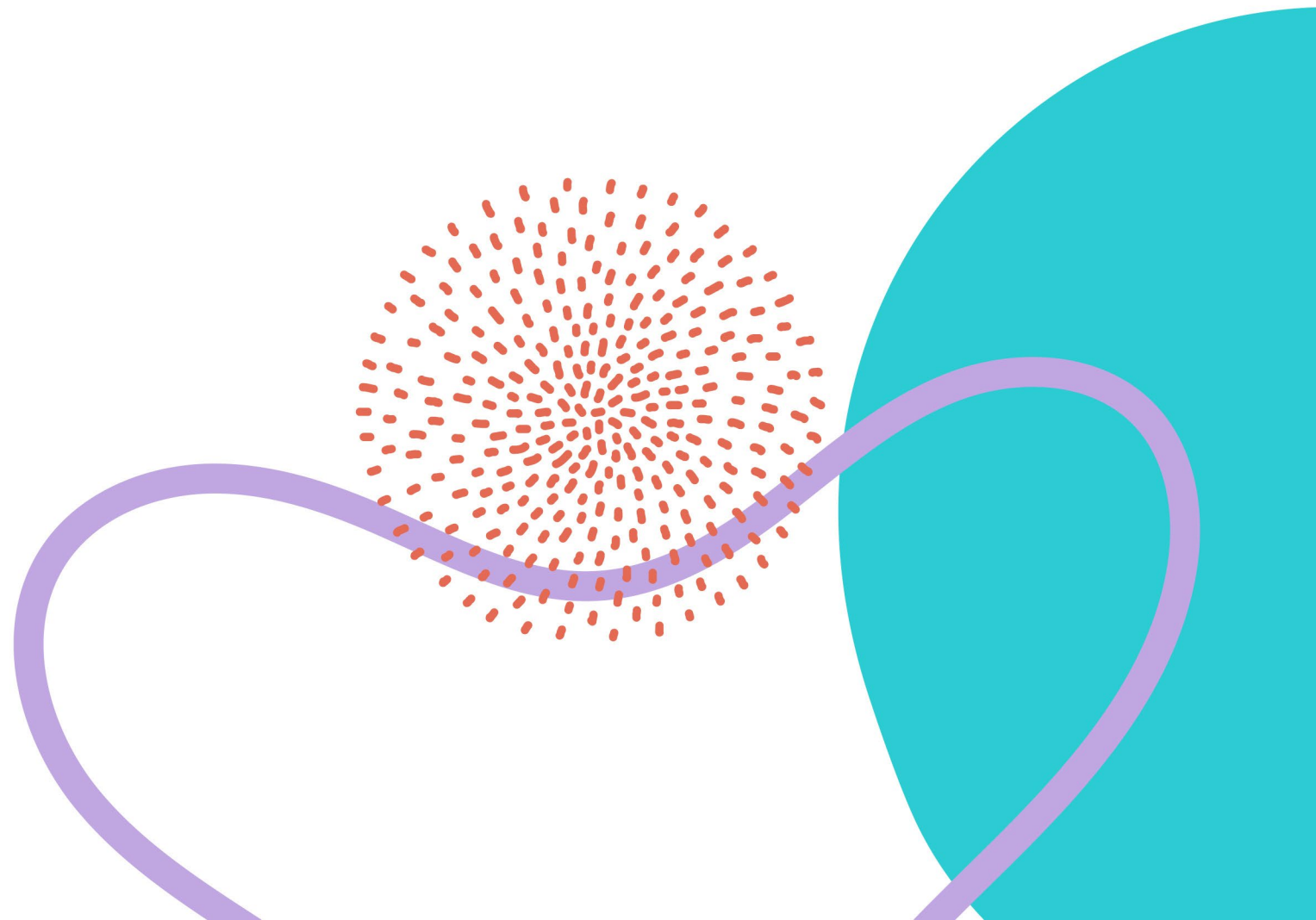


How to Develop a Logic Model



**National
Children's
Alliance®**

*The Force Behind
Children's Advocacy Centers*



What is a logic model?

- Logic models are effective tools to assist in program planning, implementation, management, evaluation, and reporting. They are a detailed visual representation of a proposed program.
- A logic model is a graphic illustration of the relationship between a program's resources, activities, and its intended effects. Logic models clearly and concisely show how interventions affect behavior and achieve a goal. They can be described as road maps that specify causal pathways and the step-by-step relationship between planned work and intended results.

Why develop a logic model?

- Generate a clear understanding of how your proposed project will work
- Support program planning and improvement

Why develop a logic model?

- Logic models offer the following benefits:

- ★ Clearly identify the program objectives, activities, and desired results.
- ★ Clarify assumptions and relationships between the program efforts and expected outcomes.
- ★ Communicate key elements of the program.
- ★ Identify what to focus on in a program.
- ★ Guide assessment of underlying project assumptions and promotes self-correction

What are the components of a logic model?

- There are many ways to depict logic models. Logic models may be simple or complex. The type and complexity of the logic model will depend on program focus, the purpose of the logic model, and the audience.
- NCA's required logic model uses one of the simpler forms:

Logic Model

Application Type:

Organization Name:

Use these matrix links to complete your logic model:

[Core Direct CAC Services](#)

[Rural Capacity Building](#)

[Program Improvement](#)

[DTVf](#)

FOCUS AREAS

These focus areas have been pre-filled based on the allowable goals under each grant type. Some grant types are limited to only one goal, while others allow you to choose which goals (or a combination of goals) that you would like to focus your project on.

OBJECTIVES

Use the matrix link on the logic model form to select your objectives for each focus area. Objectives explain how the goal will be achieved over the course of the grant.

These are the actions needed to achieve the programs goals.

OUTCOMES

Outcomes describes the results of a programs intended activity, program or initiative.

Example of a completed logic model

Logic Model

Organization Name: Child Advocacy Center

Application Type: Program Improvement

Use these matrix links to complete your logic model:

[Core Direct CAC Services](#)

[Rural Capacity Building](#)

[Program Improvement](#)

[DTVf](#)

[Expanding Reach and Access](#)

[Military](#)

FOCUS AREAS

OBJECTIVES

OUTCOMES

Forensic Interview

1. Increase forensic services to reduce wait times
2. Train forensic interviewer

1. Average reduction in wait time (days): 5 days
2. Number of trainings completed: 2 trainings on FI

Victim Advocacy

1. Train victim advocate
2. Implement/increase victim advocate services

1. Number of trainings completed: 2 trainings on advocacy
2. Number of services provided; number of referrals made: 150

Using reverse logic to create a Logic Model

- What is the desired outcome?

- ★ Average reduction in wait time (days). But how?

- What objectives are needed to achieve the outcomes?

- ★ Increase forensic services to reduce wait times. But how?

- What is the need and which focus area should I prioritize?

- ★ Forensic Interviewing

**By applying for NCA
Grant Funds**

Completing the NCA Logic Model

- Completion of the NCA Logic Model is **OPTIONAL** for all grant types

The template is located here –

- <https://www.nationalchildrensalliance.org/2026-logic-model-template/>

- ★ It is located on the Forms & Templates page
- ★ Each award type can use the same logic model template
- ★ Click on the matrix in the top right to take you to the needed information.

- **RECOMMENDED** - Applicants are STRONGLY encouraged to complete the logic model as a **first** step.

- The completed logic model is no longer a required attachment when submitting your grant application

General Application Tools

The following tools provide examples of how to complete the general sections of each application. There are similar tools on each Award Toolkit page that provide examples of how to complete the Project Design and Implementation section for each specific grant type.



Application
Training Video



Application
Instructions



Step-By-Step
Instructions



Logic Model
Template